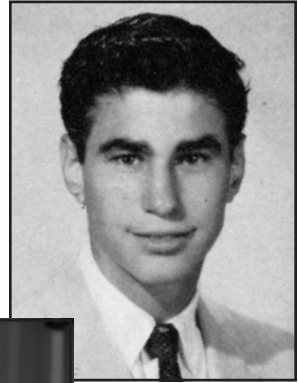


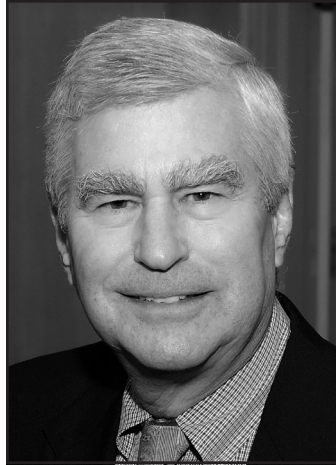
Dr. Herbert T. Abelson

Class of 1958

Pediatrician and researcher Herbert T. Abelson was instrumental in identifying the genetic cause for a form of leukemia referred to as CML.



What started with his fundamental work with mice ended up with the development of Gleevec, a drug that specifically targets the molecular abnormality in CML involving a gene now known as ABL – and named for Abelson.



Herbert T. Abelson, MD

Class of 1958

He served as chairman of pediatrics at the University of Washington School of Medicine, Seattle Children's Hospital and the University of Chicago Pritzker School of Medicine.

Abelson's fundraising leadership efforts led to the building of the Comer Children's Hospital at the University of Chicago and the establishment of an endowed Herbert T. Abelson Professorship at the University of Chicago School of Medicine.

Now retired, he and his wife, Connie, love to travel, read, write, garden and enjoy their family. They are active in their town of Granby, Massachusetts, where Abelson currently serves on the Board of Health.