

# 2002 Hall of Fame Inductee

## Allen Brockman

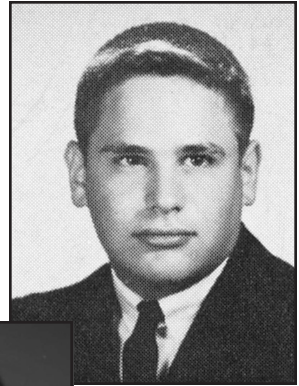
*Class of 1964*

Allen Brockman is a man who cares about kids. In 1988, his dream of starting a camp for seriously ill children became a reality, with the founding of Camp Rainbow. He, along with his wife, Ronnie Goldberg Brockman, are the Directors of Camp Rainbow. Camp Rainbow is a program that affords seriously ill children, ages 6 to 13, the opportunity to attend a week-long sleep-over summer camp. During its first 15 years of existence, Camp Rainbow has served 1,197 children at no cost to the campers' families.

Camp Rainbow was an idea that came to Brockman as he visited children at area hospitals while serving as chairman of The Dream Factory of Metro St. Louis, a position he held for three years. He is also involved with such groups as Friends of Kids with Cancer; is a volunteer consultant to the KidSmart program, which is a free store for teachers to shop for school supplies and educational materials; served as youth advisor for Congregation Shaare Emeth Temple Youth Group; served on the National Dream Factory Board; and was a Big Brother for three boys.

Brockman has been honored for his unending involvement, generosity, and compassion toward children as a recipient of the J Associates Mitzvah Star Award, recipient with his wife Ronnie of the "Above and Beyond the Call" award presented by the National Dream Factory, and by such organizations as The Dream Factory of Metro St. Louis, Congregation Shaare Emeth, and The Men's Dinner Group Against Cancer. He also lends a helping hand to the Habitat for Humanity program.

Brockman is currently employed as vice president of sales for Cerf Brothers Bag Company.



**Allen  
Brockman**  
*Class of 1964*

